

LOUISA  
HARDING

---

LILLIAN  
TULLA TWEED

LHP  
31-07

# LILLIAN

---

## TEXTURED ARGYLE VEST

---

### Actual Size:

86	90	94 cm
34	35½	37 in

### Finished length:

50	50	50 cm
20	20	20 in

2nd size photographed

### Yarn

Knitted in Louisa Harding Yarns Tulla Tweed Sh. 101 Munro

2	2	2 x 100g balls
---	---	----------------

### Needles

Pair of 5.5 mm (US 9) knitting needles

Pair of 6 mm (US 10) knitting needles

5.5 mm (US 9) 16 in circular needle

Cable needle

Stitch markers

### Tension/gauge

18 sts x 26 rows to 10 cm (4 in) square measured over st st using 6 mm (US 11) knitting needles once blocked.

### Abbreviations

**beg** begin(s); beginning, **cont** continue(s); continuing, **dec(s)** decrease(s); decreasing, **fol** follow(s); following, **inc(s)** increase(s); increasing, **K** knit, **M1P** make one purlwise (increase), **P** purl, **patt(s)** pattern(s), **psso** pass slipped stitch over, **rem** remain(s); remaining, **rep** repeat(s); repeating, **RS** right side, **st** stitch(es), **st st** stocking (stockinette) stitch, **SM** slip marker, **K2tog** knit 2 stitches together, **WS** wrong side, **SSK** slip 2 stitches knitwise, one at a time, from the left needle to right needle, insert left needle tip through both front loops and knit together from this position (1 stitch decrease), **CN** cable needle, **1/1 LC** slip next st on to CN, hold at front, K1, K1 from CN, **1/1 RC** slip next st on to CN, hold at back, K1, K1 from CN, **1/1/1 RC** slip 2 sts on to CN, hold at back, K1, slip 2nd st on CN back onto LH needle and knit, K1 from CN, **1/1/1 LC** slip 2 sts on to CN, hold at front, K1, slip 2nd st on CN back onto LH needle and knit, K1 from CN, **S1KtogP** slip next stitch, K2tog, pass slip stitch over the two stitches knitted together, **K3tog** knit 3 stitches together,

### Front

Using 5.5 mm (US 9) needles cast on 77(81:85) sts.

Work 10 rows in rib setting sts as folls:

**Rib row 1 (RS):** K2, P0(2:4), (K1, P2, K3, P2) 9 times, K1, P0(2:4), K2.

**Rib row 2 (WS):** K2, K0(2:4), (P1, K2, P3, K2) 9 times, P1, K0(2:4), K2.

These 2 rows for the rib patt.

Work a further 8 rows in rib.

Change to 6 mm (US 10) needles and work from chart for front and written instructions as folls:

**Row 1 (RS):** K15(17:19), place a stitch marker, K6, (1/1/1 RC, K5, 1/1/1 LC, K5) twice, 1/1/1 RC, K6, place a stitch marker, K15(17:19).

**Row 2 (WS):** P15(17:19), SM - slip stitch marker, P7, (K1, P15) twice, K1, P7, SM, P15(17:19).

**Row 3:** K to SM, SM, K5, (1/1 RC, K1, 1/1 LC, K3) 4 times, 1/1 RC, K1, 1/1 LC, K5, SM, K to end.

**Row 4:** P to SM, SM, P6, (K3, P13) twice, K3, P6, SM, P to end.

**Row 5:** K to SM, SM, K4, (1/1 RC, K3, 1/1 LC, K1) 4 times, 1/1 RC, K3, 1/1 LC, K4, SM, K to end.

**Row 6:** P to SM, SM, P5, (K5, P11) twice, K5, P5, SM P to end.

**Row 7:** K to SM, SM, K2, (1/1/1 RC, K5, 1/1/1 LC, K5) twice, 1/1/1 RC, K5, 1/1/1 LC, K2, SM, K to end.

**Row 8:** P to SM, SM, P3, (K1, P1, K5, P1, K1, P7) twice, K1, P1, K5, P1, K1, P3, SM, P to end.

**Row 9:** K to SM, SM, K1, (1/1 RC, K1, 1/1 LC, K3) 5 times, 1/1 RC, K1, 1/1 LC, K1, SM, K to end.

**Row 10:** P to SM, SM, P2, ([K3, P1] twice, K3, P5) twice, (K3, P1) twice, K3, P2, SM, P to end.

**Row 11:** K to SM, SM, (1/1 RC, K3, 1/1 LC, K1) 5 times, 1/1 RC, K3, 1/1 LC, SM, K to end.

**Row 12:** P to SM, SM, P1, (K5, P1, K1, P1, K5, P1, SM, P to end.

**Row 13:** K to SM, SM, K6, (1/1/1 LC, K5, 1/1/1 RC, K5) twice, 1/1/1 LC, K6, SM, K to end.

**Row 14:** Repeat row 12.

**Row 15:** K to SM, SM, (1/1 LC, K3, 1/1 RC, K1) 5 times, 1/1 LC, K3, 1/1 RC, SM, K to end.

**Row 16:** Repeat row 10.

**Row 17:** K to SM, SM, K1, (1/1 LC, K1, 1/1 RC, K3) 5 times, 1/1 LC, K1, 1/1 RC, K1, SM, K to end.

**Row 18:** Repeat row 8.

**Row 19:** K to SM, SM, K2, (1/1/1 LC, K5, 1/1/1 RC, K5) twice, 1/1/1 LC, K5, 1/1/1 RC, K2, SM, K to end.

**Row 20:** Repeat row 6.

**Row 21:** K to SM, SM, K4, (1/1 LC, K3, 1/1 RC, K1) 4 times, 1/1 LC, K3, 1/1 RC, K4, SM, K to end.

**Row 22:** Repeat row 4.

**Row 23:** K to SM, SM, K5, (1/1 LC, K1, 1/1 RC, K3) 4 times, 1/1 LC, K1, 1/1 RC, K5, SM, K to end.

**Row 24:** Repeat row 2.

**Rows 25 - 48:** Repeat rows 1 - 24.

**Rows 49 - 72:** Repeat rows 1 - 24.

**Row 73 (chart row 29):** K to SM, SM, K6, (1/1/1 RC, K5, 1/1/1 LC, K5) twice, 1/1/1 RC, K6, SM, K to end.

**Row 74 (chart row 30):** P to SM, SM, P7, (K1, P15) twice, K1, P7, SM, P to end.

### Left Front

**Shape armhole and work left front neck shaping**

**Row 75 (dec):** Cast off 3(5:7) sts, K to SM, K5, (1/1 RC, K1, 1/1 LC, K3) twice, K2tog, K1, leave rem sts on a holder for right front neck. (35 sts)

**Row 76:** K1, P13, K3, P6, SM, P to end.

**Row 77 (dec):** Cast off 3 sts, K to SM, K4, (1/1 RC, K3, 1/1 LC, K1) twice, K2tog, K1. (31 sts)

**Row 78:** K1, P11, K5, P5, SM, P to end.

**Row 79 (dec):** SSK, K to SM, K2, 1/1/1 RC, K5, 1/1/1 LC, K5, K3tog, K1. (28 sts)

**Row 80:** K1, P7, K1, P1, K5, P1, K1, P3, SM, P to end.

**Row 81 (dec):** SSK, K to SM, K1, (1/1 RC, K1, 1/1 LC, K3) twice, K2tog, K1. (26 sts)

**Row 82:** K1, P5, (K3, P1) twice, K3, P2, SM, P to end.

**Row 83 (dec):** SSK, K to SM, (1/1 RC, K3, 1/1 LC, K1) twice, K2tog, K1. (24 sts)

**Row 84:** K1, P3, K5, P1, K1, P1, K5, P1, SM, P to end.

Cont to dec front neck shaping as illustrated to row 14 sts, ending with RS facing for next row.

Work 20 rows ending with RS facing for next row.

Cast off 7 sts at beg next row and foll alt row.

### Right Front

**Shape armhole and work left front neck shaping**

**Row 75:** Rejoin yarn to sts left on holder for right front, pick up centre st, SSK, (K3, 1/1 RC, K1, 1/1 LC) twice, K5, SM, K to end. (38(40:42) sts)

**Row 76:** Cast off 3(5:7) sts, P to SM, SM, P6, K3, P13, K1. (35 sts)

**Row 77:** K1, SSK, (K1, 1/1 RC, K3, 1/1 LC) twice, K4, SM, K to end. (34 sts)

**Row 78:** Cast off 3 sts, P to SM, P5, K5, P11, K1. (31 sts)

**Row 79:** K1, SK2togP, K5, 1/1/1 RC, K5, 1/1/1 LC, K2, SM, K to last 2 sts, K2tog. (28 sts)

**Row 80:** P to SM, SM, P3, K1, P1, K5, P1, K1, P7, K1.

**Row 81 (dec):** K1, SSK, (K3, 1/1 RC, K1, 1/1 LC) twice, K1, SM, K to last 2 sts, K2tog. (26 sts)

**Row 82:** P to SM, P2, (K3, P1) twice, K3, P5, K1.

**Row 83 (dec):** K1, SSK, (K1, 1/1 RC, K3, 1/1 LC) twice, SM, K to last 2 sts, K2tog. (24 sts)

**Row 84:** P to SM, P3, K5, P1, K1, P1, K5, P3, K1.

Cont to work left front neck shaping as illustrated on chart to 14 sts, ending with RS facing for next row.

Work 21 rows ending with WS facing for next row.

Cast off 7 sts at beg next row and foll alt row.

### Back

Using 5.5 mm (US 9) needles cast on 77(81:85) sts.

Work 10 rows in rib setting sts as folls:

**Rib row 1 (RS):** K2, P0(2:4), (K1, P2, K3, P2) 9 times, K1, P0(2:4), K2.

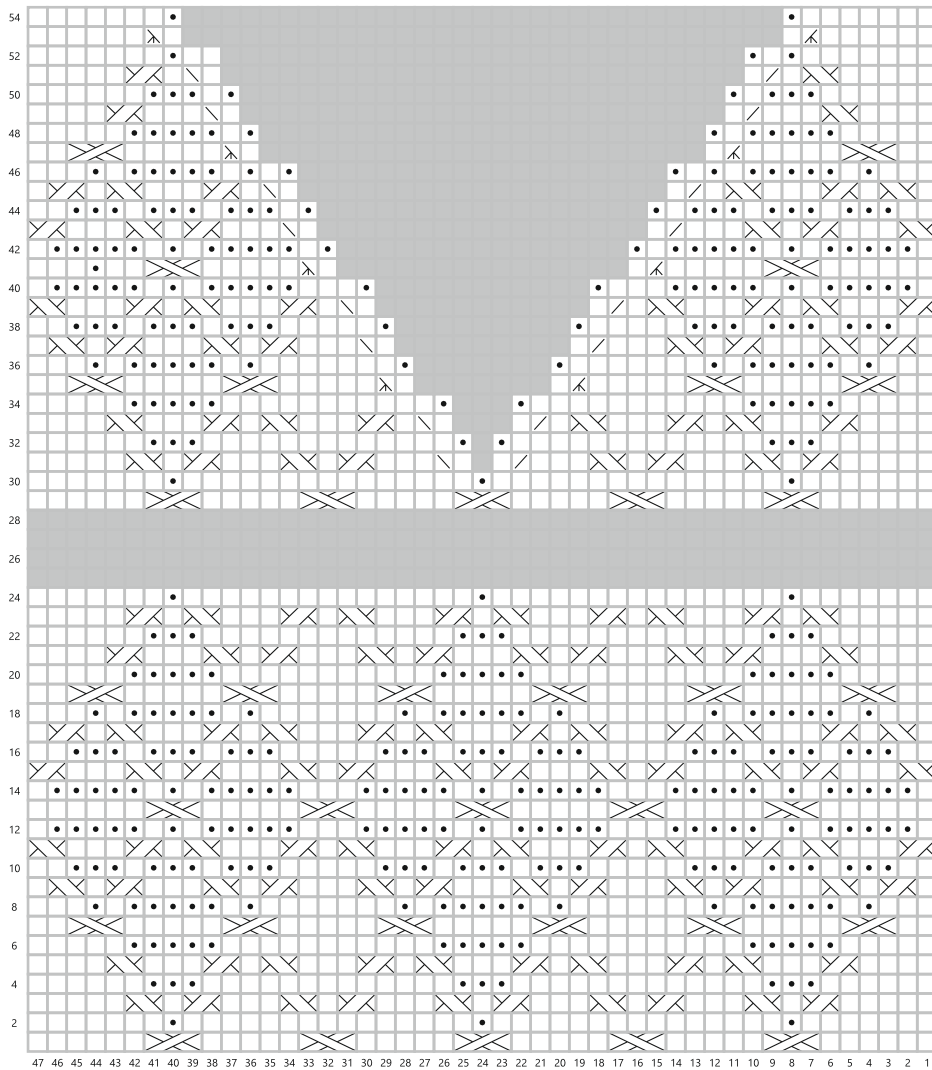
**Rib row 2 (WS):** K2, K0(2:4), (P1, K2, P3, K2) 9 times, P1, K0(2:4), K2.

These 2 rows for the rib patt.

Work a further 8 rows in rib.

Change to 6 mm (US 10) needles and work 24 rows from chart for back and written instructions as folls:





Key

RS: Knit WS: Purl	RS: Purl WS: Knit	1/1 LC	1/1 RC	1/1/1 RC	1/1/1 LC
grey no stitch	RS: SK2togP	RS: SSK	RS: K2tog	RS: K3tog	

**Row 1 (RS):** K31(33:35), place a stitch marker, K6, 1/1/1 RC, K6, place a stitch marker, K31(33:35).

**Row 2 (WS):** P31(33:35), SM - slip stitch marker, P7, K1, P7, SM, P31(33:35).

**Row 3:** K to SM, SM, K5, 1/1 RC, K1, 1/1 LC, K5, SM, K to end.

**Row 4:** P to SM, P6, K3, P6, SM, P to end.

**Row 5:** K to SM, SM, K4, 1/1 RC, K3, 1/1 LC, K4, SM, K to end.

**Row 6:** P to SM, SM, P5, K5, P5, SM, P to end.

**Row 7:** K to SM, SM, K2, 1/1/1 RC, K5, 1/1/1 LC, K2, SM, K to end.

**Row 8:** P to SM, SM, P3, K1, P1, K5, P1, K1, P3, SM, P to end.

**Row 9:** K to SM, SM, K1, 1/1 RC, K1, 1/1 LC, K3, 1/1 RC, K1, 1/1 LC, K1, SM, K to end.

**Row 10:** P to SM, SM, P2, (K3, P1) twice, K3, P2, SM, P to end.

**Row 11:** K to SM, SM, 1/1 RC, K3, 1/1 LC, K1, 1/1 RC, K3, 1/1 LC, SM, K to end.

**Row 12:** P to SM, SM, P1, K5, P1, K1, P1, K5, P1, SM, P to end.

**Row 13:** K to SM, SM, K6, 1/1/1 LC, K6, SM, K to end.

**Row 14:** Repeat row 12.

**Row 15:** K to SM, SM, 1/1 LC, K3, 1/1 RC, K1, 1/1 LC, K3, 1/1 RC, SM, K to end.

**Row 16:** Repeat row 10.

**Row 17:** K to SM, SM, K1, 1/1 LC, K1, 1/1 RC, K3, 1/1 LC, K1, 1/1 RC, K1, SM, K to end.

**Row 18:** Repeat row 8.

**Row 19:** K to SM, SM, K2, 1/1/1 LC, K5, 1/1/1 RC, K2, SM, K to end.

**Row 20:** Repeat row 6.

**Row 21:** K to SM, SM, K4, 1/1 LC, K3, 1/1 RC, K4, SM, K to end.

**Row 22:** Repeat row 4.

**Row 23:** K to SM, SM, K5, 1/1 LC, K1, 1/1 RC, K5, SM, K to end.

**Row 24:** Repeat row 2.

Rows 1-24 form the pattern placement.

**Rows 25 - 48:** Repeat rows 1 - 24.

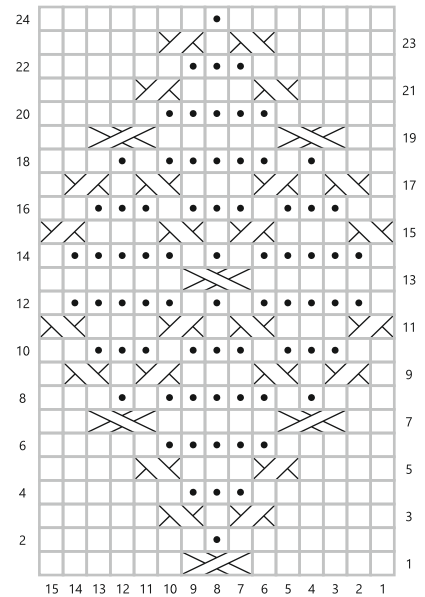
**Rows 49 - 72:** Repeat rows 1 - 24.

**Row 73:** K to marker, SM, K6, 1/1/1 RC, K6, SM, K to end.

**Row 74:** P to marker, SM, P7, K1, P7, SM, P to end.

#### Shape armholes

Keeping patt placement as set shape armholes as folls:  
Cast off 3(5:7) sts at beg next 2 rows. (71 sts)  
Cast off 3 sts at beg next 2 rows. (65 sts)



**Next row (RS)(dec):** SSK, patt to last 2 sts, K2tog. (63 sts)

Work 1 row as set.

**Next row (RS)(dec):** SSK, patt to last 2 sts, K2tog. (61 sts)

Work 1 row as set.

**Next row (RS)(dec):** SSK, patt to last 2 sts, K2tog. (59 sts)

Cont to work in patt until back matches front to shoulder shaping ending with RS facing for next row.

Cast off 7 sts at the beg next 4 rows.

Leave rem 31 sts on a holder for back neck.

#### Making Up

Join both shoulder seams.

#### Armhole edgings (both the same)

With RS facing and 5.5 mm (US 9) needles pick up and knit 39(41:43) sts to shoulder seam, pick up and K1 st from shoulder seam and 39(41:43) sts down to side seam. (79(83:87) sts)

**Next row (WS):** P1(3:5), (K2, P1, K2, P3) 9 times, K2, P1, K2, P1(3:5).

**Next row (RS):** K1(3:5), (P2, K1, P2, K3) 9 times, P2, K1, P2, K1(3:5).

**Next row (WS):** P1(3:5), (K2, P1, K2, P3) 9 times, K2, P1, K2, P1(3:5).

**Next row (dec):** K1(3:5), (P2tog, K1, P2, K3) twice, (P2, K1, P2, K3) 5 times, P2, K1, P2, (K3, P2, K1, P2tog) twice, K1(3:5). (75(79:83) sts)

Cast off in rib taking care not to pull sts too tightly.

Join side seams leaving rib edging open either side to create a vent.

### Neck edging

With RS facing and using 5.5 mm (US 9) circular needle and starting at left shoulder, pick up and knit 38 sts down to centre front neck, pick up centre stitch, pick up and knit 38 sts up to right shoulder, work across sts on holder as follows: (K4, K2tog) twice, K7, (K2tog, K4) twice. (104 sts)

**Round 1 (RS):** (P1, K3, P2, K1, P1) 13 times.

**Round 2 (dec):** (P1, K3, P2, K1, P1) 4 times, P1, K3, P2tog, K1, P2tog, K3, P1, (P1, K3, P2, K1, P1) 7 times. (102 sts)

**Round 3 (dec):** (P1, K3, P2, K1, P1) 4 times, P1, K2, P2tog, K1, P2tog, K2, P1, (P1, K3, P2, K1, P1) 7 times. (100 sts)

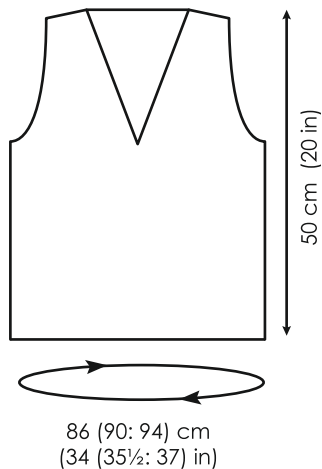
**Round 4 (dec):** (P1, K3, P2, K1, P1) 4 times, P1, K1, P2tog, K1, P2tog, K1, P1, (P1, K3, P2, K1, P1) 7 times. (98 sts)

**Round 5 (dec):** (P1, K3, P2, K1, P1) 4 times, P1, P2tog, K1, P2tog, P1, (P1, K3, P2, K1, P1) 7 times. (96 sts)

Cast off in rib taking care not to pull sts too tightly.

### Blocking

Sew in all ends, block vest as instructions given on yarn label to the dimensions given.



Copyright © 2023 Knitting Fever. All rights reserved. Knitting Fever, Inc. 315 Bayview Avenue, Amityville, New York, 11701. [www.knittingfever.com](http://www.knittingfever.com). The knitwear designs in this publication are intended for personal use only and may not be knitted for sale. This publication is protected by international copyright laws and is sold on the condition that it is used for non-commercial purposes. No part of this publication may be copied or reproduced by any means without written permission of the publisher. Measurements, gauge, and other information, are included as a guideline.



*Louisa Harding*  
Yarns

